A man and a woman are standing on a construction site, looking at architectural plans. The woman is wearing a white hard hat and an orange safety vest over a dark jacket. The man is wearing a white button-down shirt and dark trousers. They are both smiling and looking towards the right. The background shows a building under construction with blue scaffolding and a clear sky. The text "YOU DECIDE." is overlaid on the right side of the image.

YOU DECIDE.

dreso.com/career

**DREES &
SOMMER**



JEANS OR SUIT? CAR OR **BICYCLE?** E-MAIL OR **CHAT?** **TEA** OR COFFEE?

We all make around 20,000 decisions every day – most of them subconscious. But when making a career decision, it is worth giving it more thought. Are you going to choose Drees & Sommer? If you do, you are choosing a job with a future – and one with plenty of scope to make your own decisions in your projects.

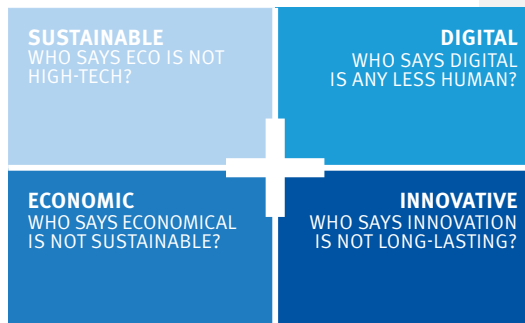
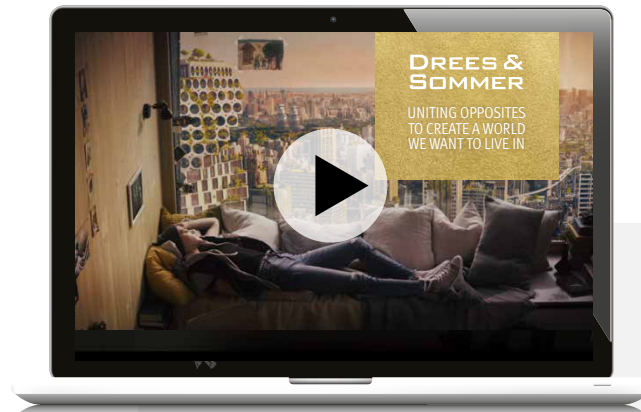
What we aspire to.

How do you turn a city into an model urban living space? There's no one-size-fits-all solution. But our Dreso+ approach promises success: It's sustainable. Digital. Innovative. And cost-efficient. We ensure these aspects are in harmony rather than competing with each other.

And this results in successful buildings, livable cities, high-performance infrastructure, high-yield portfolios and future-oriented consulting. We always keep these goals in mind – for consulting, planning, building and operating.

YOU DECIDE.

For a livable future.



Watch our award-winning film 'THE BLUE WAY next exit' on YouTube!

Facts and figures.

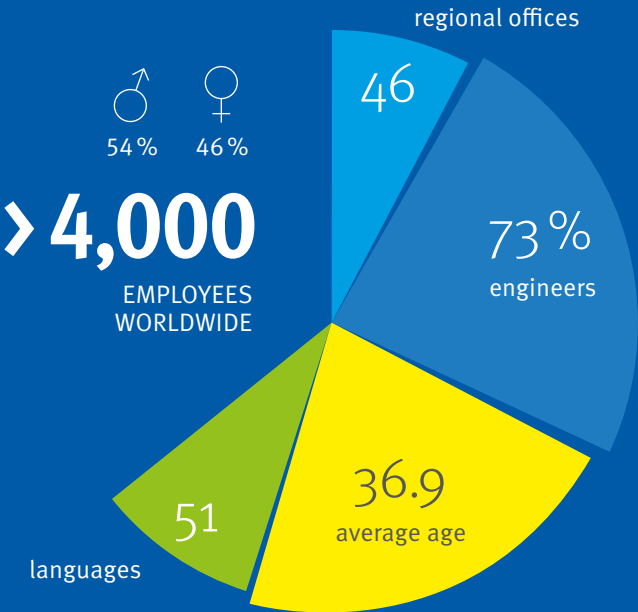
670

learning and further education opportunities are offered by our Drees & Sommer Academy. There is something for everyone.



4,404

That's how many projects we supported in 2020.



73

nationalities

2.94

tonnes. That's the average carbon emissions per employee. We offset these emissions with carbon credits and also plant 75,000 trees per year. We are thus on our way to becoming a Beneficial Company.

1,218

colleagues are under 30.

637

Dreesos are over 50.



Visit our website for even more facts and figures on Drees & Sommer!

Who we are.

We Dresos are a 'team of teams' – with people from different professional groups who are a good fit for us both professionally and personally. Depending on the task at hand, an architect may work with a civil engineer or a business manager with a lawyer. Or communication experts and environmental engineers develop new solutions together.

Characteristics such as age, gender, ethnicity, or physical and mental abilities are no reason for us to disadvantage or prefer someone. Diversified teams achieve better results. That's a fact. We Dresos appreciate the inspiring collaboration that diversity engenders.

YOU DECIDE.

For a diversified work environment.



Learn about Dresos and
their different roles!



Typical Dresdo.

We think ahead, digitally and long-term. We argue and inspire. We decide and make it happen. We network and collaborate. We don't have a conventional mission statement. Instead, we have nine statements that express how we tick, how we work together and what makes us special.

Many colleagues say **GOOD IDEAS – NO LIMITS** is their favorite statement. Because if you want to make a difference, you need the freedom to take decisions. Are you ready to quickly take responsibility for projects, initiatives or employees? Do you have your own ideas and the energy to assert and implement them? If so, you've come to the right company.

YOU DECIDE.

For a company that believes in you.

STATEMENTS

**01 VALUE GUARANTEED 02 SUCCESS WITH INTEGRITY
03 GOOD IDEAS – NO LIMITS 04 LEADING THE WAY
05 INDEPENDENT TOGETHER 06 PASSION FOR
PERFORMANCE 07 GLOBALLY LOCAL 08 INNOVATION
FOR THE FUTURE 09 BLUE IS COLORFUL**



Take a look at these videos to see what the statements mean for our colleagues!



That's sustainability.

We think and act sustainably and holistically. And we take all aspects of sustainability into account: We believe that cost-efficiency, ecology and functionality are inextricably linked. We call this approach *'the blue way'*. And *'the blue way'* is a combination of reason and emotion. Strict, goal-oriented processes that leave scope for creativity. In our projects, we always involve both hemispheres of the brain – the creative right and rational left. That's the holistic thinking approach. *the blue way*®

We are not guided solely by achieving immediate success for our customers, but also by the impact our actions will have on future generations. That's why we are transitioning to being a Beneficial Company. A Beneficial Company gives back more to the environment than it consumes through its operations. It creates a lasting positive benefit for the environment and society. Together with EPEA GmbH – Part of Drees & Sommer, we are working on establishing the Cradle to Cradle® principle in all industrial sectors.

YOU DECIDE.

For a sustainable employer.

Take a look at all the ways in which we support sustainability.



DRESO
READY
FOR
FUTURE

Our employees implemented 50 sustainable projects in our anniversary year 2020.
50years.dreso.com



Our work environment.

We are already shaping the work environment of the future. Those who can work freely and flexibly can achieve peak performance – and have fun doing it. We are convinced of that. We trust every Dresos to handle this freedom and flexibility responsibly.

Business. Balance. Benefits: With **DRESOMORE**, we have a program that focuses on people and promotes inspiring work environments. It also includes a whole range of benefits, discounts and additional services. Here are a few examples: Do you value modern workplaces, mobile working and a wide range of training and development opportunities? So do we. In addition, we offer a range of part-time work models and support master's and certificate programs. Do you regularly engage in sporting activities? If so, you qualify for our health bonus. At Drees & Sommer, fresh fruit, tea and coffee are all available free of charge. And activities such as team workshops, company runs, and table football all offer opportunities for informal chats with colleagues. Our annual Office Seminar – which involves all Dresos worldwide – is legendary. If you like cycling, you can benefit from our company bike leasing scheme. There is a public transport subsidy for colleagues who commute by bus or rail. And if you forgo a company car to which you are entitled, we reward you with financial compensation instead.

YOU DECIDE.

For freedom, flexibility – and concessions.





Find out what
we offer you.

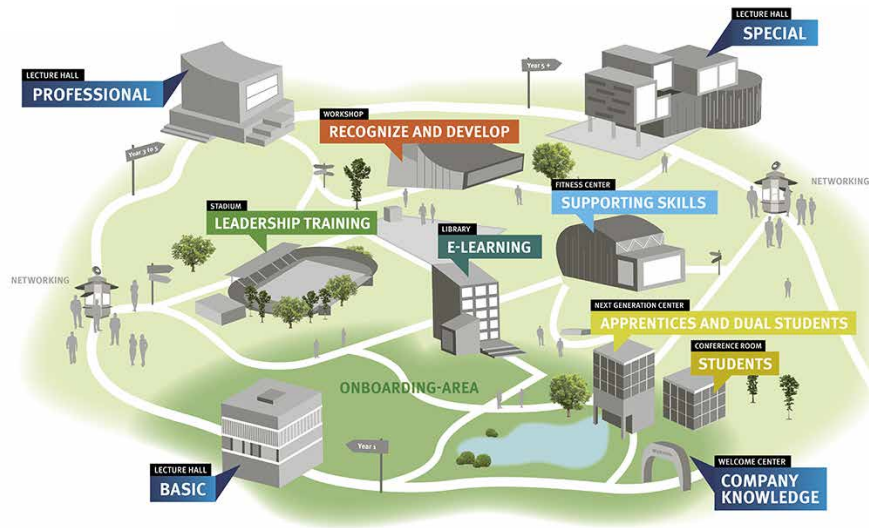
What you learn at Dresos.

You already have valuable knowledge from university, your vocational training or professional experience from previous jobs. Our further training, seminars and coaching programs ensure that you continue to develop and learn.

What happens on your first day? It starts with a special onboarding program. In addition to your manager, you also have a mentor to provide support.

From then on, you will continue to develop along your chosen career path in your job family – either as a specialist or as a manager. Our Drees & Sommer Academy and external institutes courses support you on your path.

YOU DECIDE.
For new knowledge.



Welcome to the campus of the Drees & Sommer Academy with a wide range of programs for all Dresos.

What we do.

What began more than 50 years ago as a small engineering office in Stuttgart has developed into a company operating internationally with over 4,000 employees. The range of tasks we take on has grown with us and become more and more diverse. Our project teams bring together a wide variety of specialists, depending on what the project needs.

We dedicate ourselves with passion to demanding tasks related to consulting, planning, construction and operation. Many of our projects are in the public eye. They change cityscapes, create new landmarks and set new standards in terms of digitization and sustainability.

And that has been the impact of just a small selection of current projects we have been involved in. Every year we face new and exciting tasks. Sometimes, we have projects on which only a handful of colleagues work for a few weeks. Many others span several years. Sometimes we take on a specific area of responsibility, while at other times we have overall responsibility for a project as General Construction Manager. And then there are projects that have nothing to do with construction, in which we advise customers on their core business and their processes.

YOU DECIDE.

For future-proof projects.



Aurea Tower, Luxembourg:
A multi-use tower in Differdange
with residential and commercial parts.

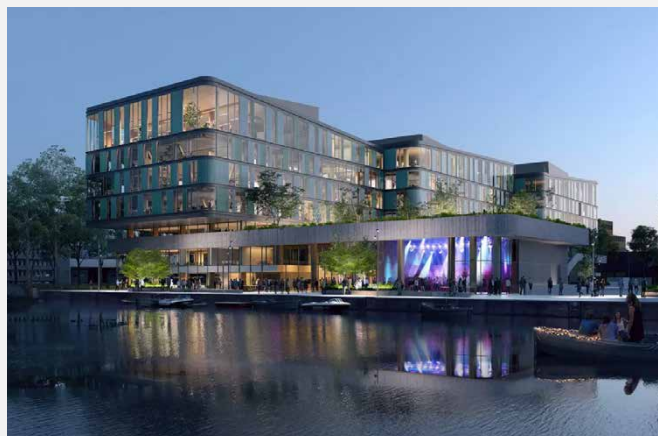


Lamborghini, Bologna:
New buildings and conversions
at the company's historic
Sant'Agata Bolognese site for
the production of a new model.

DPG Media Headquarters,
Amsterdam:
The new headquarters of
DPG Media in Amsterdam is
developed to be one of the
most impressive wood-
hybrid office buildings in
the world.



Pudong Art Museum, Shanghai:
A new cultural landmark in the
heart of Shanghai, along the
city's iconic Huangpu river and
Oriental Pearl Tower.



From S to XXL:
Discover which projects
we have worked on.



Schloss Roxburghe Hotel, Roxburghe:
Refurbishment of 22-bedroom,
19th century house, together with a new
57-bedroom hotel extension.

Roche Bau 2, Basel:
The office tower for F. Hoffmann La Roche AG
is the tallest building in Switzerland.



What we do internationally.

We are increasingly focusing on internationalization, and there are good reasons for that. To an ever greater extent, real estate and consulting sector players are operating across national borders. Many of our customers think and act internationally, so they are often interested in expanding their cooperation with Drees & Sommer – especially within Europe.

And what does it mean if Drees & Sommer has more international projects? For Dresos, that means greater opportunity to work on international projects, serve global customers in different countries, broaden their horizons and unlock new perspectives. And international growth contributes to greater diversity in the Drees & Sommer Group, because colleagues who have different cultural and professional experience in other markets bring new perspectives.

YOU DECIDE.

For international projects.



Let Dresos welcome you to
our international team.





Learn more about
international work at
Drees & Sommer.

Our regional offices.

Aachen, Amsterdam, Atlanta, Basel, Berlin, Bremen, Brussels, Budapest, Cologne, Copenhagen, Dortmund, Dresden, Dubai, Düsseldorf, Eindhoven, Erfurt, Frankfurt, Freiburg, Hamburg, Hanover, Kent, Kiel, Lausanne, Leipzig, Linz, London, Madrid, Magdeburg, Mainz, Malaga, Mannheim, Milan, Moscow, Munich, Munsbach/Luxembourg, Münster, Nieu-Vennep, Nuremberg, Paris, Potsdam, Prague, Rome, Rotterdam, Shanghai, St. Petersburg, Stuttgart, Thessaloniki, Ulm, Vienna, Warsaw, Zurich

Your team.

We are families: BIM manager, installation planner – or perhaps your preference is to be a Lean Construction manager? To assist with orientation, we have grouped similar roles into job families. In the operational areas, these are consulting, planning, project management and construction management. Decide for yourself which job family appeals most to you and which is the best fit for your strengths and career goals. All our job families offer scope for both specialist and management careers.

YOU DECIDE.

For a place in your job family.



Discover what roles
await you in the
different job families!



CONSULTANT
PROJECT MANAGER
PLANNER
CONSTRUCTION MANAGER
SALES MANAGER
CORPORATE UNITS
BUSINESS SUPPORT



glassdoor

Popular employer: Drees & Sommer
is a front runner on prestigious ratings
platforms.



You decide.

We would be delighted to receive your
job application and to get to know you.
Take a look at our current vacancies here.



If you have any questions, please get in touch
by phone or email: Phone +49 711 1317-1333,
career@dreso.com

www.dreso.com/career

Photo credits: Front cover: © Westend61, © Artur Debat – gettyimages.com | P. 2: © Westend61 – gettyimages.com |
P. 5: © Nattakorn Maneerat, © Marcel Krijger, © Panel 8 Photography | P. 6: © Hinterhaus Productions – gettyimages.com |
P. 9: © skynesher – gettyimages.com | P.10/11 Projekte: Aurea Tower © Aurea/IKO Real Estate, Lamborghini © Automobili
Lamborghini S.p.A., Schloss Roxburghe © Christian Laukemper, DPG Media Headquarters © Team V/Proloog, Roche Bau 2
© F. Hoffmann-La Roche AG | P. 12: © Thomas Barwick – gettyimages.com | P. 14: © Westend61 – gettyimages.com,
© Marcel Krijger, © Rick Genjaar

Imprint
Drees & Sommer SE
Obere Waldplätze 13
70569 Stuttgart
Telephone +49 711 1317-0
Telefax +49 711 1317-101
info@dreso.com
www.dreso.com

© Drees & Sommer 2021



Highest eco-effectiveness
Cradle to Cradle Certified™
print products by Lokay

dreso.com/career



**DREES &
SOMMER**