



HIGHRISE BUILDING AS A
CONTRIBUTION TO A HEALTHY
CITY





NIKLAS VEELKEN

vita

Niklas Veelken

Dipl.-Ing. Architect / MArch Berlage Institute

Technische Universität Braunschweig
Belage-Institute Rotterdam, (NL)

* 01.01.1976

Father of two children





NIKLAS VEELKEN
work

Professional Background

since 2021 Drees & Sommer, Berlin, Senior Team Leader

2018-2021 ATP architekten ingenieure, Berlin, Managing Director

2015-2018 David Chipperfield Architects, Berlin, Project Manager

2014-2015 Baumschlager Eberle, Berlin, Project Manager/Office Manager

2007-2014 Gerkan, Marg und Partner, Berlin, Associate Director





NIKLAS VEELKEN

projects



Personal reference projects (excerpt)

Greenland Central Plaza, Zhengzhou 2x300m, (completed) Mixed Use, (CN)

Greenland Central Plaza, Hefei 213m, 196m, 160m, (under construction) Mixed Use, (CN)

Lend Lease Circular Quay 263m, Sidney, (competition), (AU)

Greenland Center, Wuhan 606m (competition) Mixed Use, CN

Greenland Er'qi Plaza Zhengzhou 2x270m, (competition 1st prize) Mixed Use, (CN)

Integrated Transportation Hub, Qianhai various heights (in planning) Mixed Use, (CN)

Universiade Sports Center Shenzhen (completed) (CN)

Airport Terminal 2, Berlin (completed) (GER)

Airport Terminal 3, Frankfurt (under construction) (GER)



HIGHRISE / HEALTHY CITY

Highrise

Healthy City



HIGHRISE / HEALTHY CITY

Highrise

Healthy City



HEALTHY CITY – A DEFINITION

The screenshot shows the WHO Europe website. At the top left is the WHO logo and 'World Health Organization'. To its right is 'Europe'. Below is a dark navigation bar with icons and text for 'Home', 'Health topics', 'Our work', 'Newsroom', 'Data', 'Emergencies', and 'About us'. Below the navigation bar is a breadcrumb trail: 'Home / Groups and networks / WHO European Healthy Cities Network / What is a healthy city?'. The main heading is 'What is a healthy city?'. On the left, there is a sidebar with a back arrow, 'WHO European Healthy Cities Network', and a button 'What is a healthy city?'. The main content area starts with the text 'A healthy city is defined by a process, not an outcome.' followed by a bulleted list of six points. The third point is highlighted in pink: 'A healthy city is one that continually creates and improves its physical and social environments and expands the community resources that enable people to mutually support each other in performing all the functions of life and developing to their maximum potential.' Below the list is a paragraph: 'Healthy cities are places that deliver for people and the planet. They engage the whole of society, encouraging the participation of all communities in the pursuit of peace and prosperity. Healthy cities lead by example in order to achieve change for the better, tackling inequalities and promoting good governance and leadership for health and well-being. Innovation, knowledge sharing and health diplomacy are valued and nurtured in healthy cities.'

„Healthy Cities lead by example in order to achieve change for the better...“



HEALTHY CITY – A DEFINITION



World Health
Organization

Health topics ▾

Our work ▾

Newsroom ▾

Data ▾

Emergencies ▾

About us ▾

„human approach to
development...“

People

A healthy city takes a **human approach to development**, prioritizing investment in people and ensuring access for all to common goods and services. This includes:

- investment in human and social capital as a strategic approach for urban development
- promoting inclusion, integration and non-discrimination
- building trust, resilience and a focus on ethics and values.

Participation

A healthy city leads by example ensuring community participation in decisions that affect where and how people live, their common goods and services. This includes:

- **improved city spaces** and services, based on the needs and assets in communities
- stronger accountability and governance for health and well-being
- empowered and resilient populations
- increased ownership over individual health and well-being.

Prosperity

A healthy city strives for enhanced community prosperity and strengthened assets through values-based governance of common goods and services. This includes:

- progressive measures of social progress
- **investment in the circular economy**
- universal minimum social protection.

„improved city spaces ...“

„investment in the
circular economy...“



HEALTHY CITY – A DEFINITION



World Health Organization

Health topics ▾

Our work ▾

Newsroom ▾

Data ▾

Emergencies ▾

About us ▾

„well-being of both
people and the planet...“

„...human-centred urban
development...“

„integrating ...sustainability
into urban development...“

„enhance **inclusiveness** in
the...common spaces...“

Planet

A healthy city ensures that the **health and well-being of both the people and the planet** are at the heart of all the city's internal and external policies. This includes:

- a whole-of-city approach to health and well-being
- coherence across levels of governance in the approach to health and well-being
- strengthened city health diplomacy.

Place

A healthy city creates an accessible social, physical and cultural environment that facilitates the pursuit of health and well-being. This includes:

- shifting from a needs-based to an assets-based approach
- **human-centred urban development and planning**
- **integrating health equity and sustainability into urban development and planning**
- **enhanced inclusiveness in the use and governance of common spaces.**

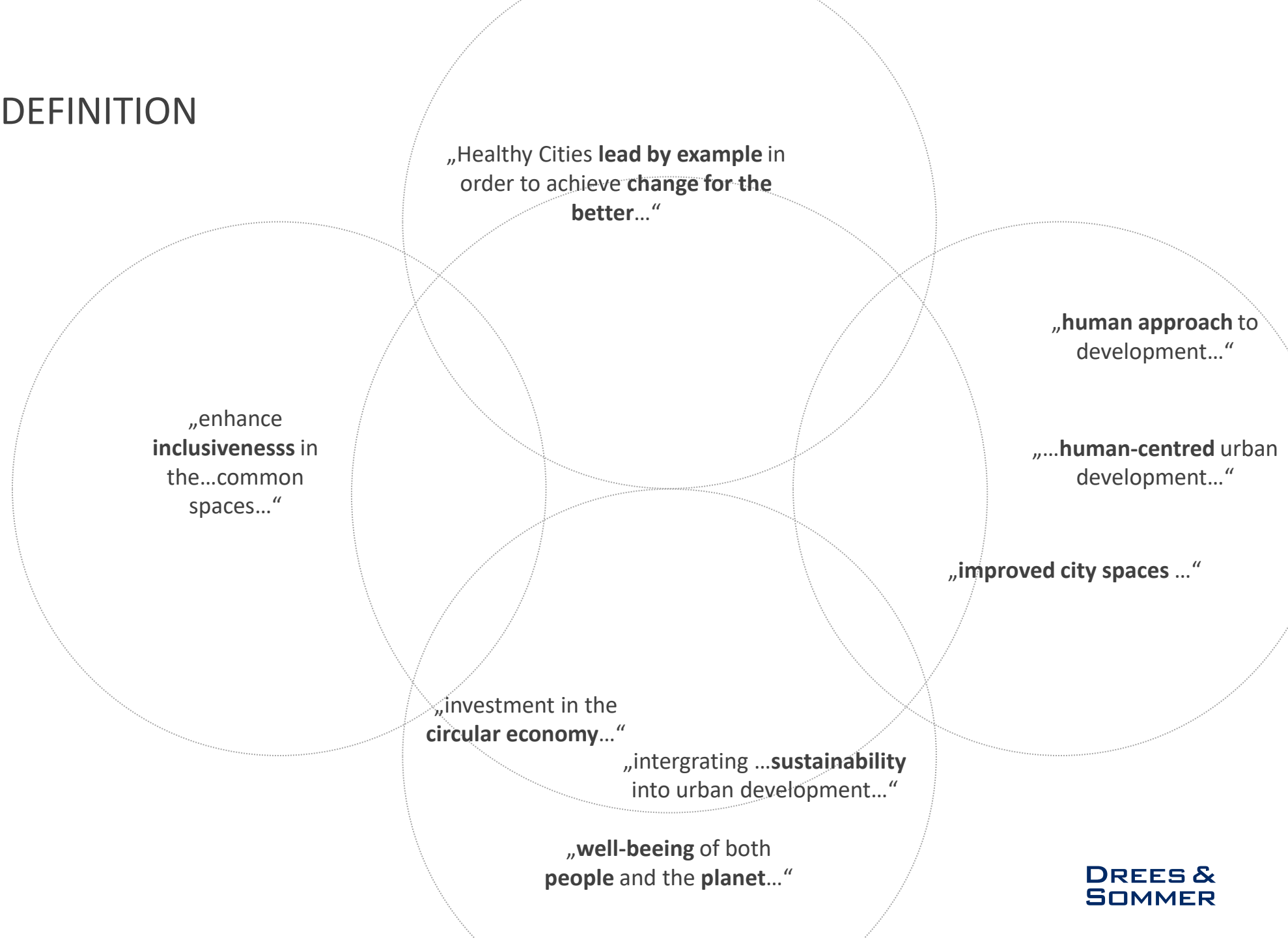
Peace

A healthy city leads by example by promoting and keeping peace in all its actions, policies and systems. This includes:

- institutions, governance systems and architecture that prioritize social justice and inclusive participation;
- the promotion of cultural norms of inclusion and equity, a non-exploitative egalitarian approach;
- formal governance and societal norms that tackle corruption, discrimination and all forms of violence.



HEALTHY CITY – A DEFINITION





HEALTHY CITY – A DEFINITION

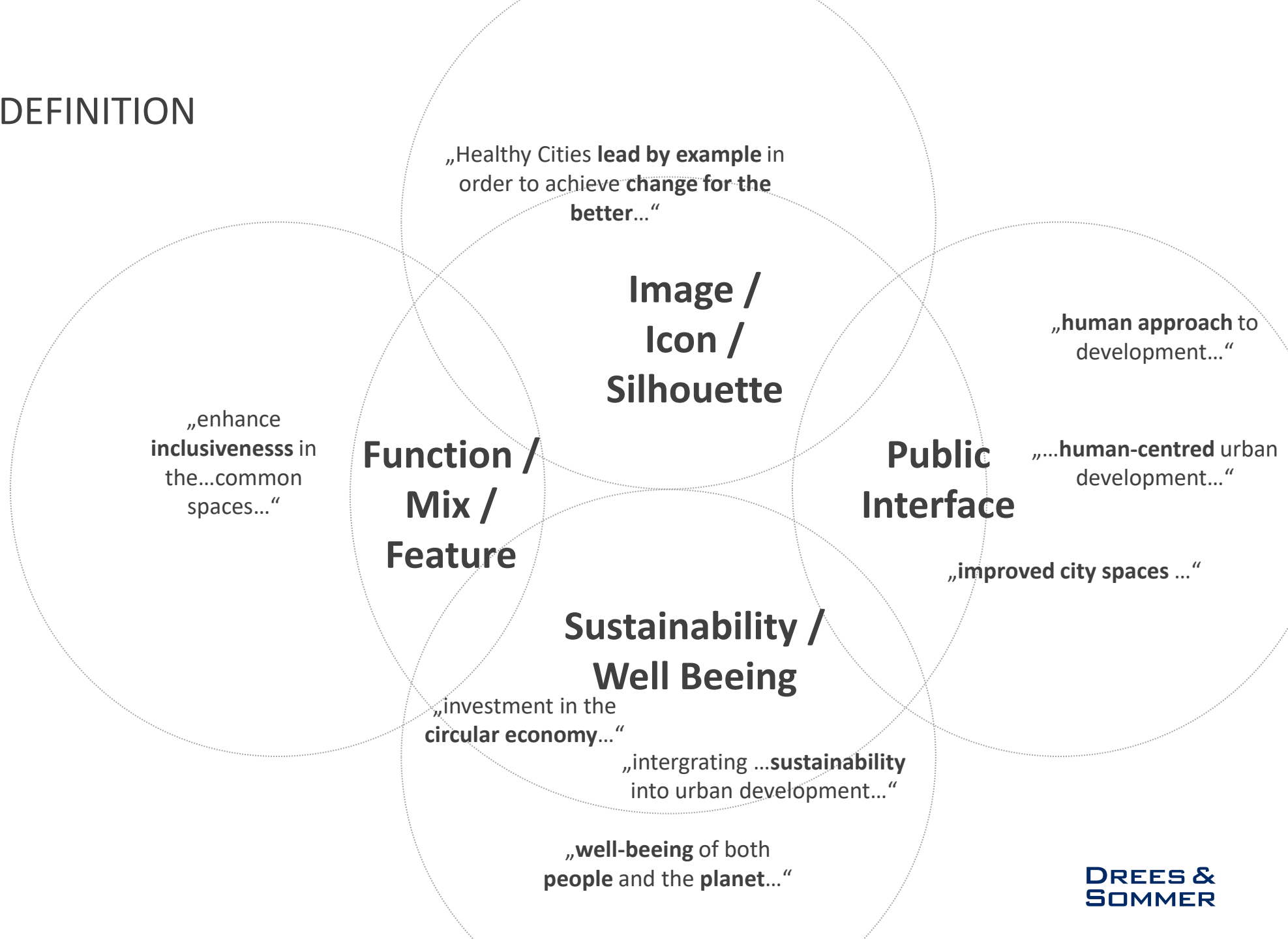
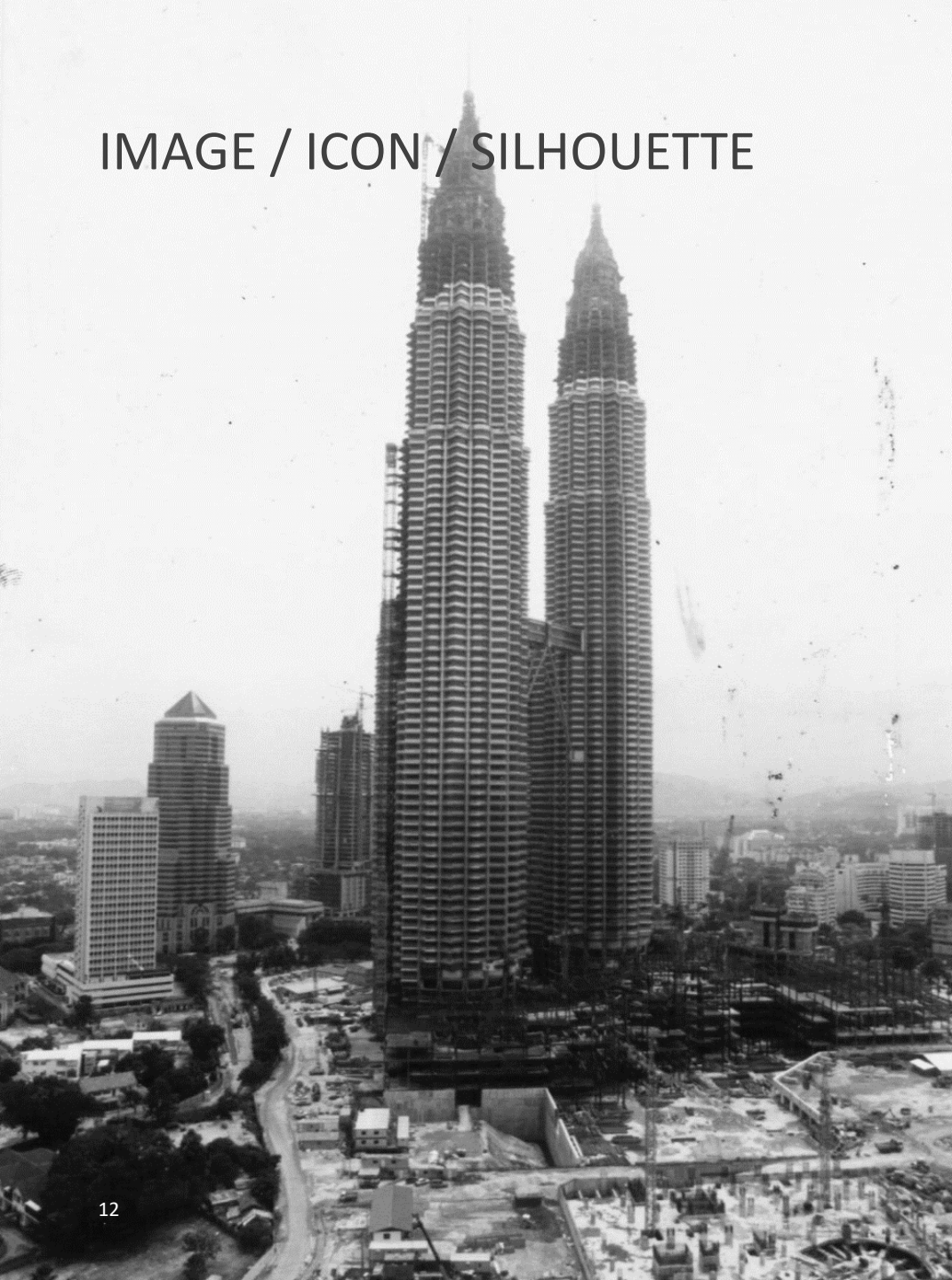
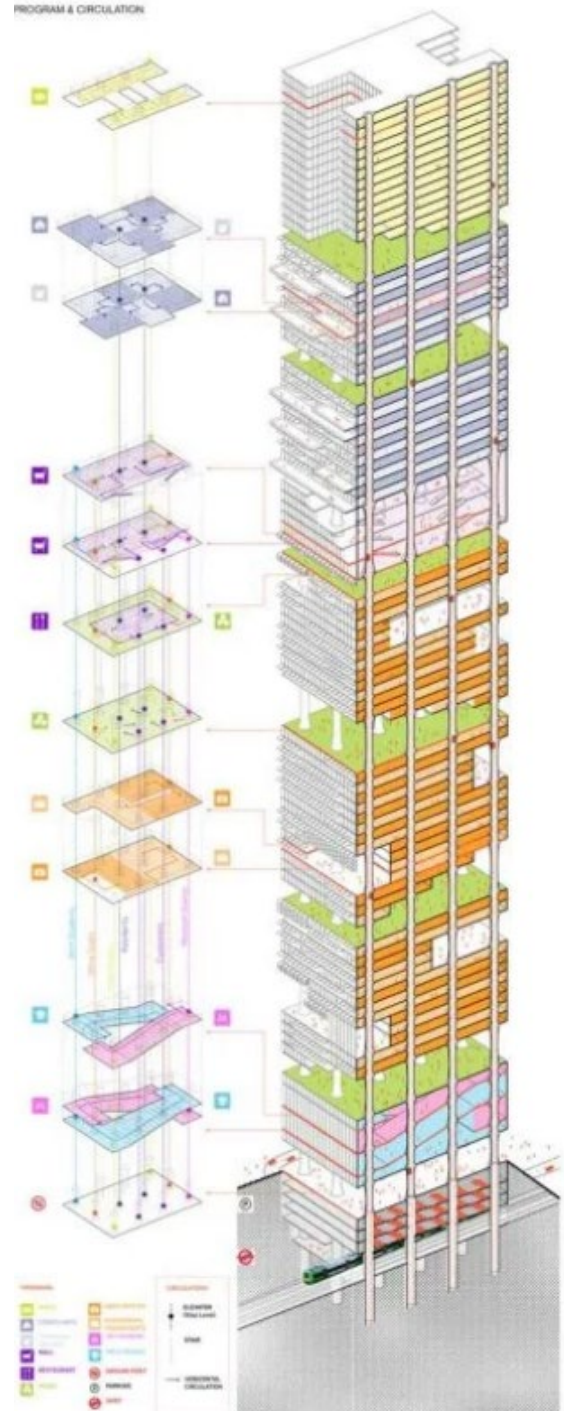
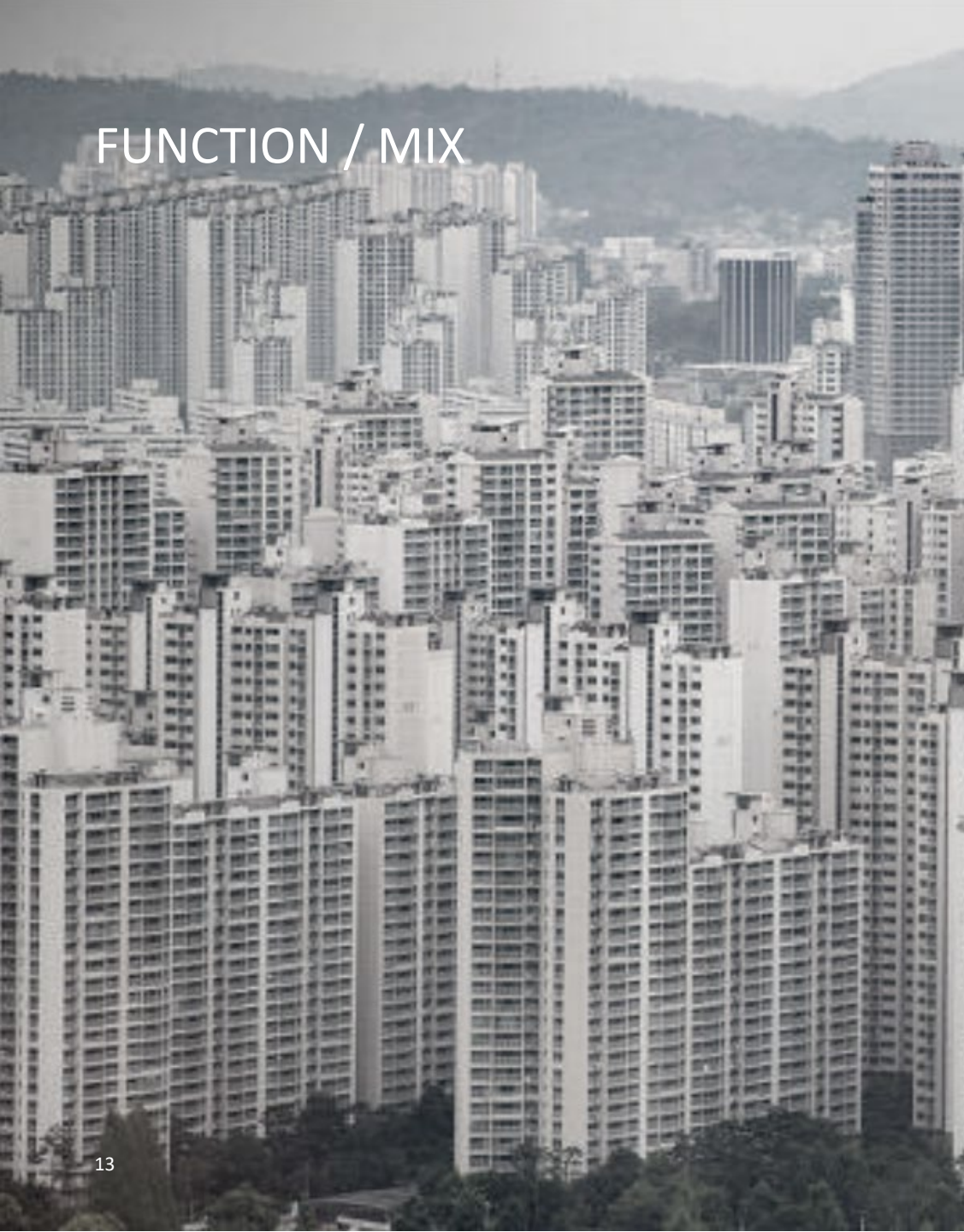


IMAGE / ICON / SILHOUETTE



FUNCTION / MIX



DREES & SOMMER

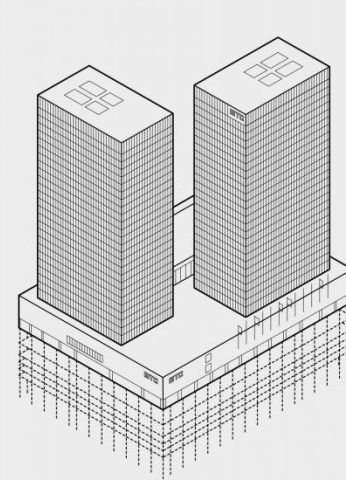
PUBLIC INTERFACE



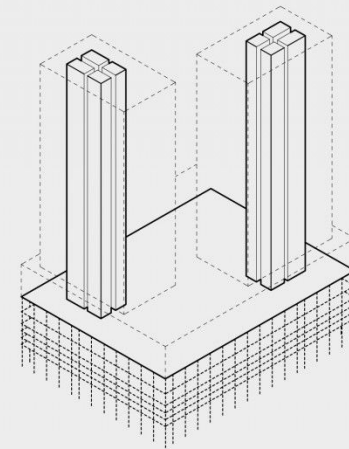
WELL BEING



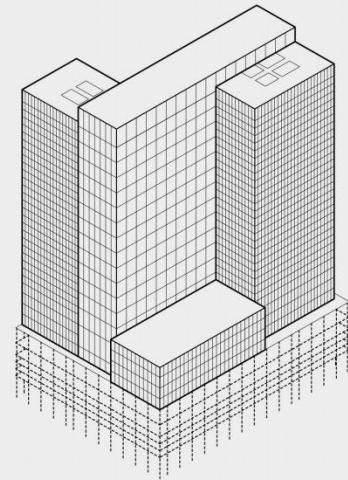
SUSTAINABILITY



1972



2020



2023



HIGHRISE / HEALTHY CITY

FOR
Highrise
AND
VS.
a Healthy City

„Healthy Cities lead by example in order to achieve change for the better...“

Image /
Icon /
Silhouette

„human approach to development...“

„enhance inclusiveness in the...common spaces...“

Function /
Mix /
Feature

Public
Interface

„...human-centred urban development...“

„improved city spaces ...“

Sustainability /
Well Being

„investment in the circular economy...“

„intergrating ...sustainability into urban development...“

„well-being of both people and the planet...“

GREENLAND CENTRAL PLAZA ZHENGZHOU

personal reference with gmp

GREENLAND CENTRAL PLAZA ZHENGZHOU

personal reference with gmp



Two towers framing a common central plaza in between the two building plots form a city gate opposite the cities central train station

DREES &
SOMMER

GREENLAND CENTRAL PLAZA ZHENGZHOU
personal reference with gmp

icon



GREENLAND CENTRAL PLAZA ZHENGZHOU
personal reference with gmp

public
interface



GREENLAND CENTRAL PLAZA ZHENGZHOU
personal reference with gmp

mixed functions

building setbacks articulate skylobbies that provoke interaction of different users and thus create vertical neighborhoods





GREENLAND CENTRAL PLAZA ZHENGZHOU
personal reference with gmp

well
being

////
THANK YOU!